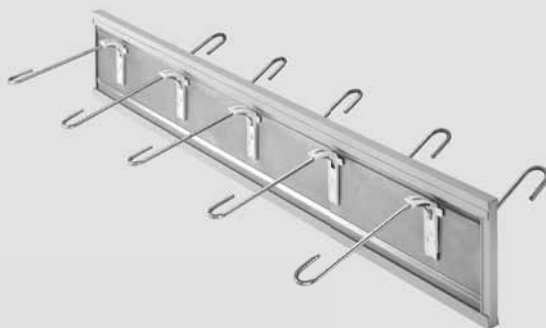


HALFEN HTT

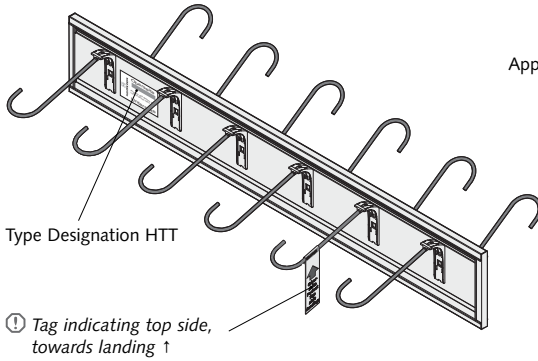
INST_HTT 01/18

- GB** Impact Sound Insulation Elements
- D** Trittschaldämmelemente
- PL** Elementy z izolacją akustyczną

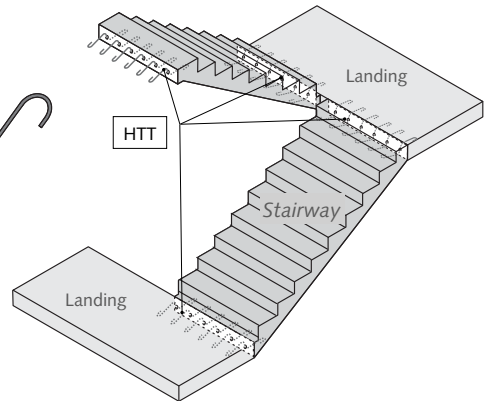


Assembly Instructions • Montageanleitung • Instrukcja montażu

Identification



Application example



Example type designation:

HTT-4 - 18 - 100

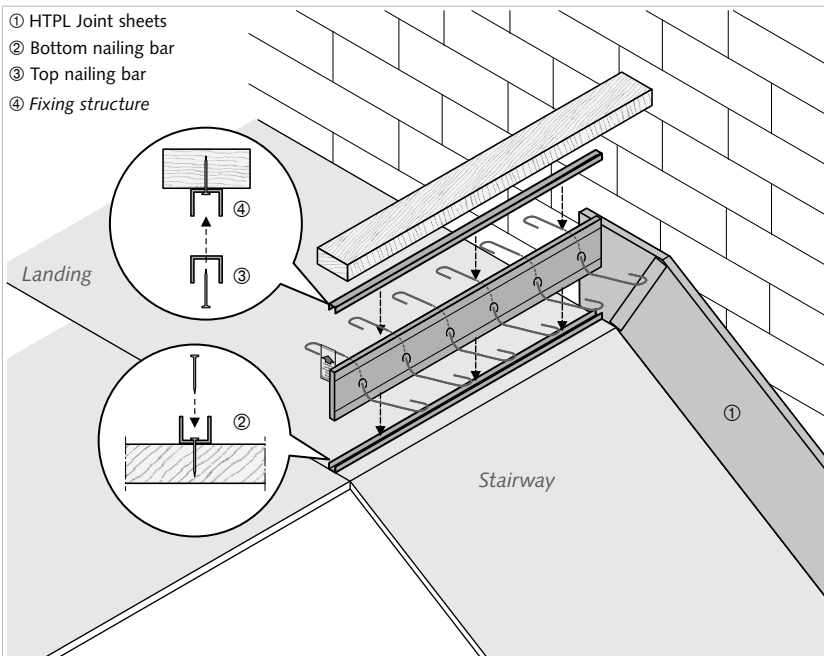
Element length l [cm]

Height landing [cm]

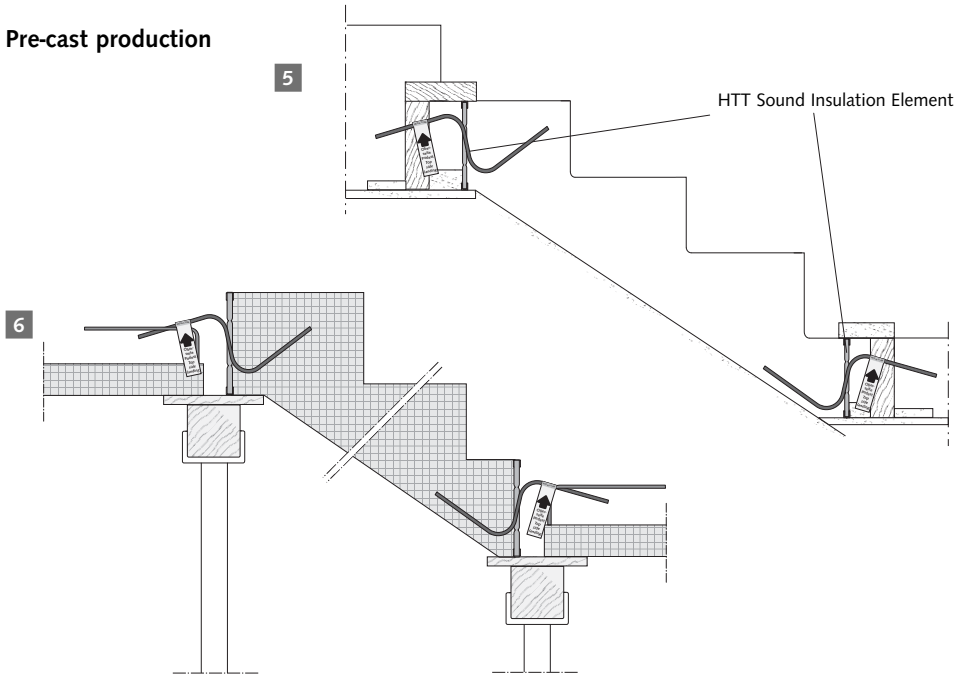
Product group/load range

Installation

In-situ concreting

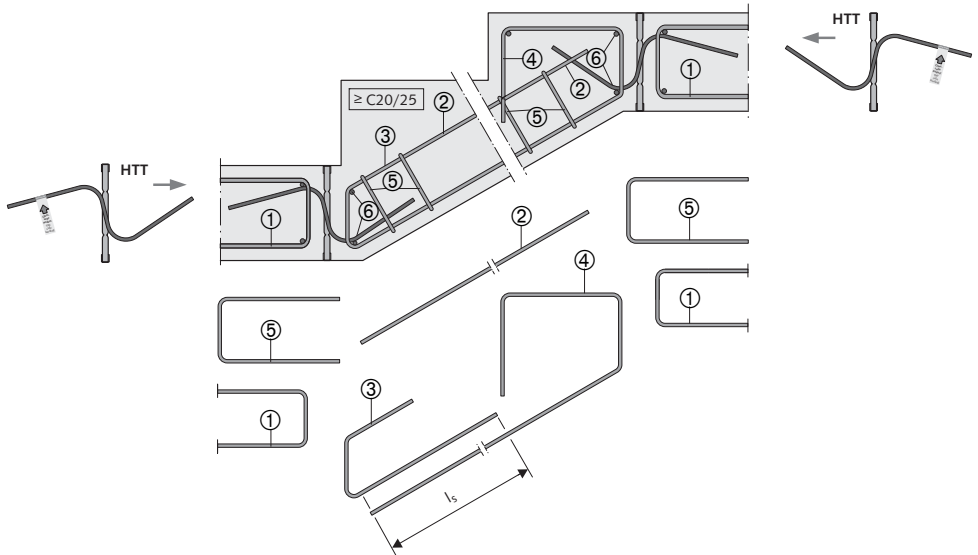


Pre-cast production



- 1 HTPL Joint sheets ① to be attached on the side wall following the stairway using the integrated self-adhesive tape. The joints must be cleaned carefully and carried out without lack! Afterwards they have to be closed with adhesive tape.
- 2 Bottom HTT nailing bar ② to be fixed to the formwork at the appropriate place. Insert HTT Element.
- 3 Top HTT nailing bar ③ to be attached using a fixing structure (e.g. timber batten ④) and placed on the HTT Impact sound insulation unit from the top. The HTT Element must be aligned and fixed vertically and at the appropriate position.
- 4 Installation of site reinforcement according to accounts of the structural engineer. Concreting landing and stairway.
- 5 Shuttering in the pre-cast plant
- 6 Installation on the construction site

On-site additional reinforcement



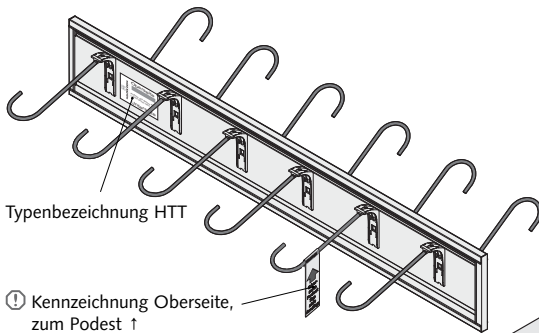
The additional on-site reinforcement is to be installed according to the reinforcement drawings and the engineers specification.

Typical design:

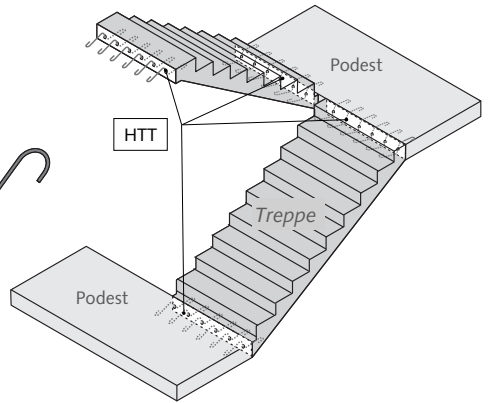
- ① End stirrups or mesh reinforcement
- ② Top reinforcement layer
- ③ End stirrup, bent up as hang-up reinforcement
- ④ Bottom reinforcement layer, bent up as hang-up reinforcement
- ⑤ End stirrups, 2× diam. 6 each
- ⑥ Bar reinforcement diam. 8 (HTT-4, -6)
 diam. 10 (HTT-8)

ⓘ Annotation: item ① - ④ to be calculated by static requirements

Kennzeichnung



Anwendungsbeispiel



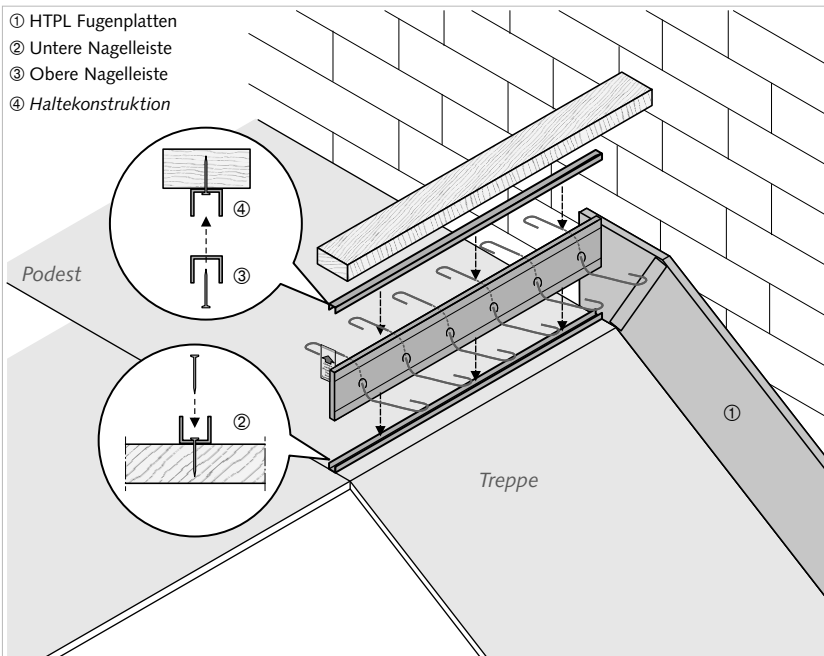
Beispiel Typenbezeichnung:

HTT-4 - 18 - 100

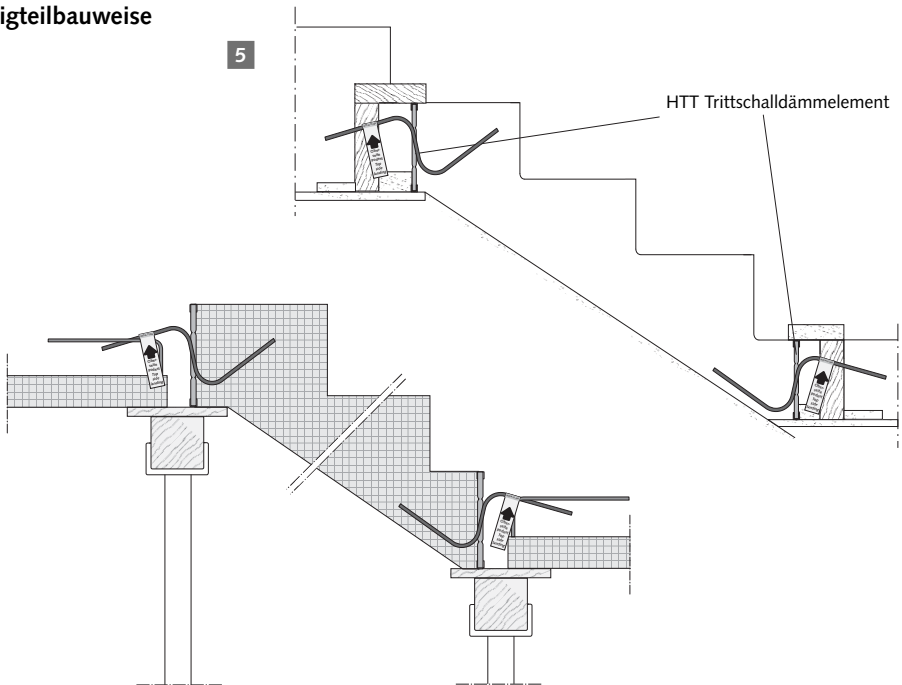
- Elementlänge l [cm]
- Höhe Podest [cm]
- Produktgruppe/Laststufe

Einbau

Ortbeton-Bauweise

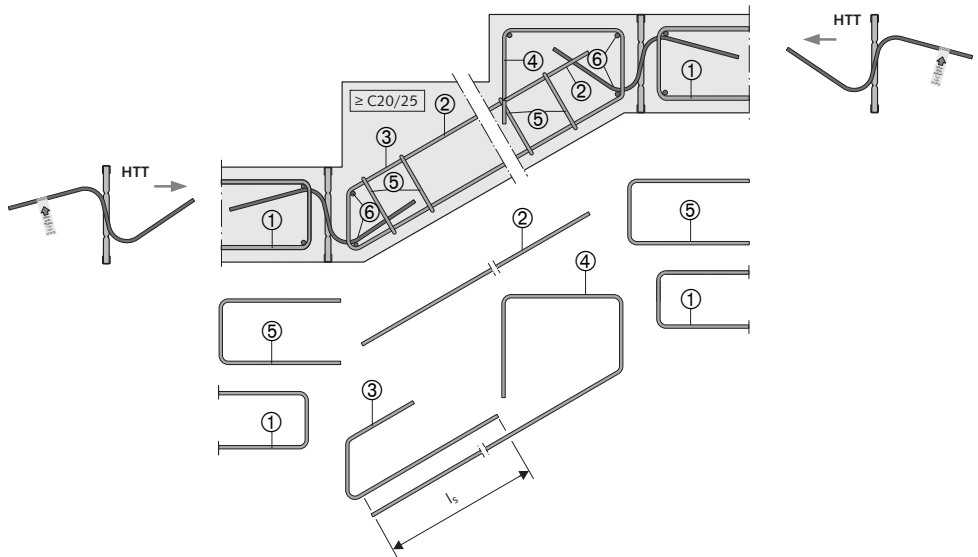


Fertigteilbauweise



- 1** HTPL Fugenplatten ① seitlich dem Treppenlauf folgend an der Treppenhauswand ankleben. Fugen sorgfältig und lückenlos ausführen und mit Klebeband verschliessen.
- 2** HTT Nagelleiste ② unten an der vorgesehenen Stelle an die Schalung nageln. HTT Trittschalldämmelement aufsetzen.
- 3** Obere HTT Nagelleiste ③ an Haltekonstruktion (z.B. Holzleiste bauseits ④) annageln und von oben auf das HTT Element aufsetzen. Das HTT Element muss senkrecht und lagerichtig ausgerichtet und fixiert sein.
- 4** Einbau der Bauseitigen Bewehrung nach Angabe des Statikers. Betonieren von Podest und Treppenlauf.
- 5** Abschalung im Fertigteilwerk.
- 6** Einbau auf der Baustelle.

Bauseitige Zulagebewehrung



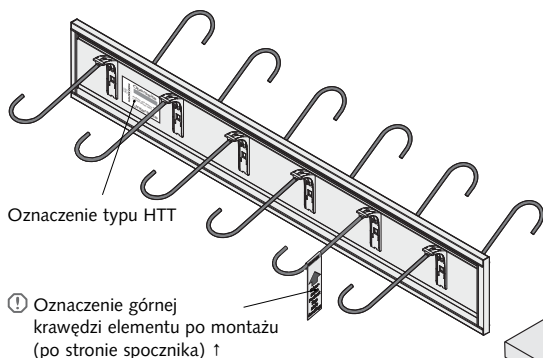
Bauseitige Zulagebewehrung gemäß den Angaben des Statikers einbauen. (Typenprüfung beachten)

Typische Ausführung:

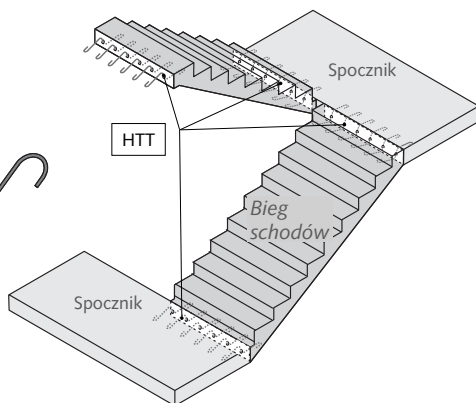
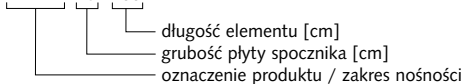
- ① Steckbügel oder Betonstahlmatte
- ② Obere Bewehrungslage
- ③ Steckbügel mit Aufbiegung als Aufhängebewehrung
- ④ Untere Bewehrungslage mit Aufbiegung als Aufhängebewehrung
- ⑤ Steckbügel, je 2 \varnothing 6
- ⑥ Stabstahl \varnothing 8 (HTT-4, -6)
 \varnothing 10 (HTT-8)

! Anmerkung: Pos. ①–④ nach statischen Erfordernissen ermitteln

Oznaczenia

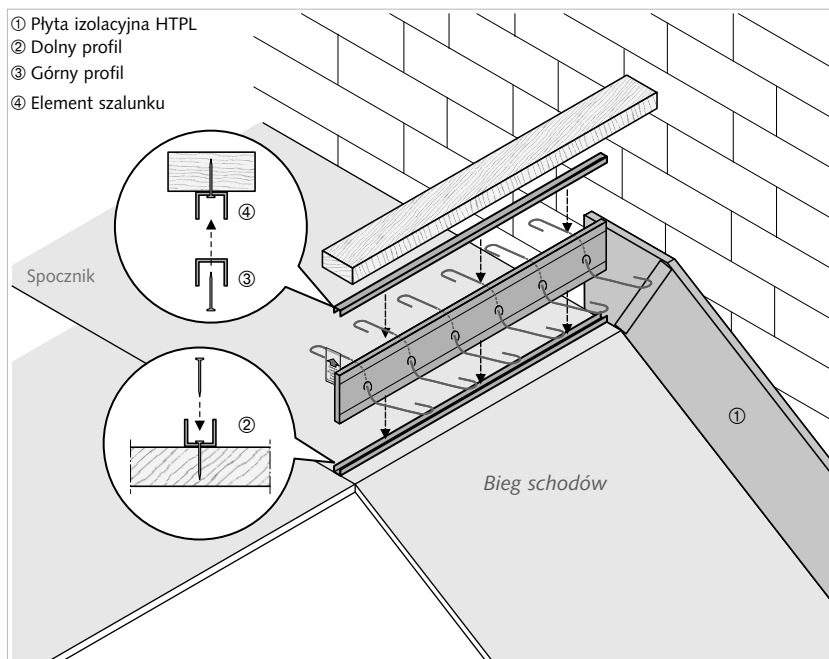


Przykład zastosowania

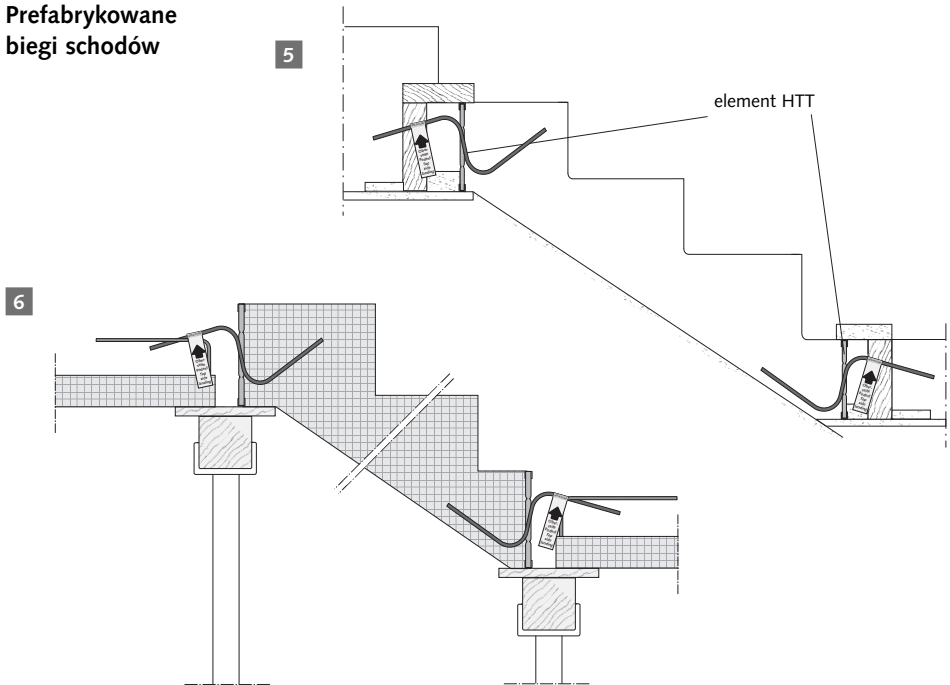
Przykładowy opis elementu: **HTT-4 - 18 - 100**

Montaż elementów HTT na budowie

Betonowanie biegów i spoczników na budowie

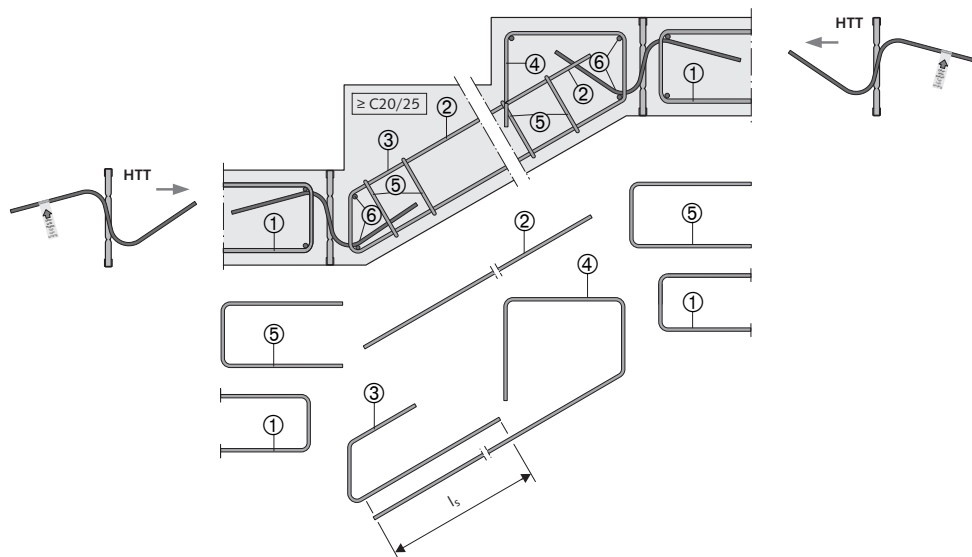


Prefabrykowane biegi schodów



- 1 Płyte izolacyjną HTPL zamocować na ścianie bocznej wzdłuż biegów schodów za pomocą taśmy klejącej ①. Pomiędzy płytami nie mogą występować przerwy ani szczeliny.
- 2 Dolną kształtkę cewą ② elementu HTT przybić gwoździami do deskowania. Wsunąć element HTT.
- 3 Górną kształtkę cewą ③ elementu HTT przybić gwoździami do elementu podtrzymującego ④ (np. listwy drewnianej) i umieścić na elemencie HTT. Przed betonowaniem należy wyrównać ustawienie elementu HTT w pionie i w poziomie.
- 4 Montaż zbrojenia biegów i podestów wg projektu wykonawczego. Betonowanie schodów.
- 5 Wbudowanie elementu HTT w biegu schodów w zakładzie prefabrykacji. Zbrojenie i betonowanie podestów na budowie.
- 6 Biegi schodów i podesty prefabrykowane. Zbrojenie górne i betonowanie podestów na budowie.

Zbrojenie montowane na budowie



Dodatkowe zbrojenie musi być wykonane zgodnie z projektem wykonawczym.

Typowy układ zbrojenia:

- ① Strzemiona lub mata zbrojeniowa
- ② Zbrojenie górne
- ③ Strzemię podwieszające
- ④ Zbrojenie dolne
- ⑤ Strzemiona 2 \varnothing 6
- ⑥ Pręt \varnothing 8 (HTT-4, -6)
 \varnothing 10 (HTT-8)

⚠ Uwaga: Poz. ① – ④ przyjęć na podstawie obliczeń statycznych

For more information on the products featured here, please contact Leviat:

Australia

Leviat
98 Kurrajong Avenue,
Mount Druitt Sydney, NSW 2770
Tel: +61 - 2 8808 3100
Email: info.au@leviat.com

Austria

Leviat
Leonard-Bernstein-Str. 10
Saturn Tower, 1220 Wien
Tel: +43 - 1 - 259 6770
Email: info.at@leviat.com

Belgium

Leviat
Borkelstraat 131
2900 Schoten
Tel: +32 - 3 - 658 0720
Email: info.be@leviat.com

China

Leviat
Room 601 Tower D,
Vantone Centre
No. A6 Chao Yang Men Wai Street
Chaoyang District
Beijing · P.R. China 100020
Tel: +86 - 10 5907 3200
Email: info.cn@leviat.com

Czech Republic

Leviat
Business Center Šafránkova
Šafránkova 1238/1
155 00 Praha 5
Tel: +420 - 311 - 690 060
Email: info.cz@leviat.com

France

Leviat
18, rue Goubet
75019 Paris
Tel: +33 - 1 - 44 52 31 00
Email: info.fr@leviat.com

Germany

Leviat
Liebigstrasse 14
40764 Langenfeld
Tel: +49 - 2173 - 970 - 0
Email: info.de@leviat.com

Italy

Leviat
Via F.lli Bronzetti N° 28
24124 Bergamo
Tel: +39 - 035 - 0760711
Email: info.it@leviat.com

Malaysia

Leviat
28 Jalan Anggerik Mokara 31/59
Kota Kemuning,
40460 Shah Alam Selangor
Tel: +603 - 5122 4182
Email: info.my@leviat.com

Netherlands

Leviat
Oostermaat 3
7623 CS Borne
Tel: +31 - 74 - 267 14 49
Email: info.nl@leviat.com

New Zealand

Leviat
2/19 Nuttall Drive, Hillsborough,
Christchurch 8022
Tel: +64 - 3 376 5205
Email: info.nz@leviat.com

Norway

Leviat
Vestre Svanholmen 5
4313 Sandnes
Tel: +47 - 51 82 34 00
Email: info.no@leviat.com

Poland

Leviat
Ul. Obornicka 287
60-691 Poznan
Tel: +48 - 61 - 622 14 14
Email: info.pl@leviat.com

Singapore

Leviat
14 Benoi Crescent
Singapore 629977
Tel: +65 - 6266 6802
Email: info.sg@leviat.com

Spain

Leviat
Polígono Industrial Santa Ana
c/ Ignacio Zuloaga, 20
28522 Rivas-Vaciamadrid
Tel: +34 - 91 632 18 40
Email: info.es@leviat.com

Sweden

Leviat
Vädursgatan 5
412 50 Göteborg
Tel: +46 - 31 - 98 58 00
Email: info.se@leviat.com

Switzerland

Leviat
Hertistrasse 25
8304 Wallisellen
Tel: +41 - 44 - 849 78 78
Email: info.ch@leviat.com

United Kingdom

Leviat
A1/A2 Portland Close
Houghton Regis LU5 5AW
Tel: +44 - 1582 - 470 300
E-Mail: info.uk@leviat.com

United States of America

Leviat
6467 S Falkenburg Rd.
Riverview, FL 33578
Tel: (800) 423-9140
Email: info.us@leviat.us

For countries not listed

Email: info@leviat.com

Leviat.com

Halfen.com

For information on certified management systems and standards, see www.halfen.com

Notes regarding this catalogue

© Protected by copyright. The construction applications and details provided in this publication are indicative only. In every case, project working details should be entrusted to appropriately qualified and experienced persons. Whilst every care has been exercised in the preparation of this publication to ensure that any advice, recommendations or information is accurate, no liability or responsibility of any kind is accepted by Leviat for inaccuracies or printing errors. Technical and design changes are reserved. With a policy of continuous product development, Leviat reserves the right to modify product design and specification at any time.

